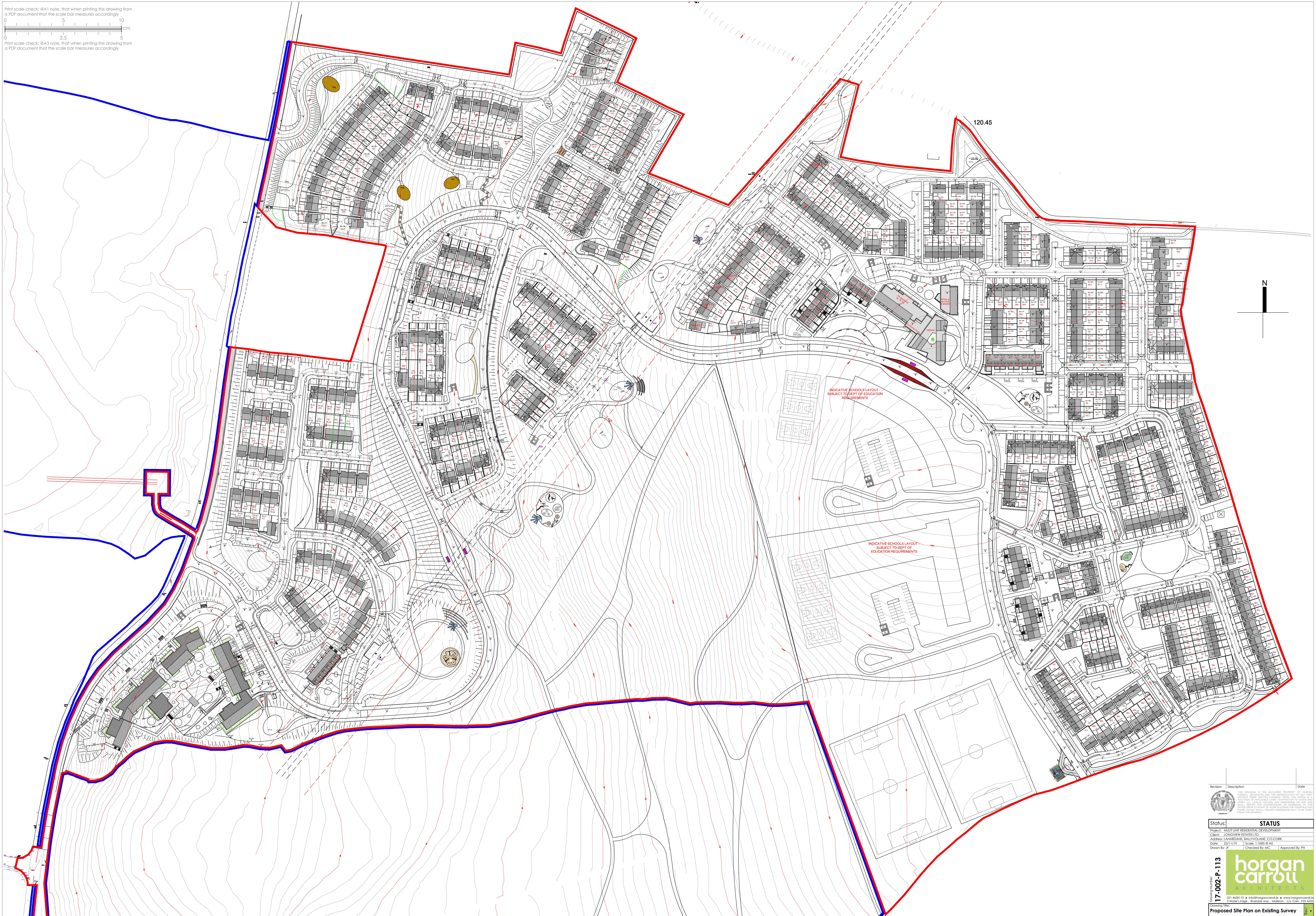


Print scale check: @A1 note, that when printing this drawing from a PDF document that the scale bar measures accordingly.  
0 5 10 cm  
0 2.5 5  
Print scale check: @A3 note, that when printing this drawing from a PDF document that the scale bar measures accordingly.



| Revision | Description       | Date     |
|----------|-------------------|----------|
| 1        | ISSUE FOR TENDERS | 20/11/19 |
| 2        | ISSUE FOR TENDERS | 20/11/19 |
| 3        | ISSUE FOR TENDERS | 20/11/19 |
| 4        | ISSUE FOR TENDERS | 20/11/19 |
| 5        | ISSUE FOR TENDERS | 20/11/19 |
| 6        | ISSUE FOR TENDERS | 20/11/19 |
| 7        | ISSUE FOR TENDERS | 20/11/19 |
| 8        | ISSUE FOR TENDERS | 20/11/19 |
| 9        | ISSUE FOR TENDERS | 20/11/19 |
| 10       | ISSUE FOR TENDERS | 20/11/19 |
| 11       | ISSUE FOR TENDERS | 20/11/19 |
| 12       | ISSUE FOR TENDERS | 20/11/19 |
| 13       | ISSUE FOR TENDERS | 20/11/19 |
| 14       | ISSUE FOR TENDERS | 20/11/19 |
| 15       | ISSUE FOR TENDERS | 20/11/19 |
| 16       | ISSUE FOR TENDERS | 20/11/19 |
| 17       | ISSUE FOR TENDERS | 20/11/19 |
| 18       | ISSUE FOR TENDERS | 20/11/19 |
| 19       | ISSUE FOR TENDERS | 20/11/19 |
| 20       | ISSUE FOR TENDERS | 20/11/19 |
| 21       | ISSUE FOR TENDERS | 20/11/19 |
| 22       | ISSUE FOR TENDERS | 20/11/19 |
| 23       | ISSUE FOR TENDERS | 20/11/19 |
| 24       | ISSUE FOR TENDERS | 20/11/19 |
| 25       | ISSUE FOR TENDERS | 20/11/19 |
| 26       | ISSUE FOR TENDERS | 20/11/19 |
| 27       | ISSUE FOR TENDERS | 20/11/19 |
| 28       | ISSUE FOR TENDERS | 20/11/19 |
| 29       | ISSUE FOR TENDERS | 20/11/19 |
| 30       | ISSUE FOR TENDERS | 20/11/19 |
| 31       | ISSUE FOR TENDERS | 20/11/19 |
| 32       | ISSUE FOR TENDERS | 20/11/19 |
| 33       | ISSUE FOR TENDERS | 20/11/19 |
| 34       | ISSUE FOR TENDERS | 20/11/19 |
| 35       | ISSUE FOR TENDERS | 20/11/19 |
| 36       | ISSUE FOR TENDERS | 20/11/19 |
| 37       | ISSUE FOR TENDERS | 20/11/19 |
| 38       | ISSUE FOR TENDERS | 20/11/19 |
| 39       | ISSUE FOR TENDERS | 20/11/19 |
| 40       | ISSUE FOR TENDERS | 20/11/19 |
| 41       | ISSUE FOR TENDERS | 20/11/19 |
| 42       | ISSUE FOR TENDERS | 20/11/19 |
| 43       | ISSUE FOR TENDERS | 20/11/19 |
| 44       | ISSUE FOR TENDERS | 20/11/19 |
| 45       | ISSUE FOR TENDERS | 20/11/19 |
| 46       | ISSUE FOR TENDERS | 20/11/19 |
| 47       | ISSUE FOR TENDERS | 20/11/19 |
| 48       | ISSUE FOR TENDERS | 20/11/19 |
| 49       | ISSUE FOR TENDERS | 20/11/19 |
| 50       | ISSUE FOR TENDERS | 20/11/19 |
| 51       | ISSUE FOR TENDERS | 20/11/19 |
| 52       | ISSUE FOR TENDERS | 20/11/19 |
| 53       | ISSUE FOR TENDERS | 20/11/19 |
| 54       | ISSUE FOR TENDERS | 20/11/19 |
| 55       | ISSUE FOR TENDERS | 20/11/19 |
| 56       | ISSUE FOR TENDERS | 20/11/19 |
| 57       | ISSUE FOR TENDERS | 20/11/19 |
| 58       | ISSUE FOR TENDERS | 20/11/19 |
| 59       | ISSUE FOR TENDERS | 20/11/19 |
| 60       | ISSUE FOR TENDERS | 20/11/19 |
| 61       | ISSUE FOR TENDERS | 20/11/19 |
| 62       | ISSUE FOR TENDERS | 20/11/19 |
| 63       | ISSUE FOR TENDERS | 20/11/19 |
| 64       | ISSUE FOR TENDERS | 20/11/19 |
| 65       | ISSUE FOR TENDERS | 20/11/19 |
| 66       | ISSUE FOR TENDERS | 20/11/19 |
| 67       | ISSUE FOR TENDERS | 20/11/19 |
| 68       | ISSUE FOR TENDERS | 20/11/19 |
| 69       | ISSUE FOR TENDERS | 20/11/19 |
| 70       | ISSUE FOR TENDERS | 20/11/19 |
| 71       | ISSUE FOR TENDERS | 20/11/19 |
| 72       | ISSUE FOR TENDERS | 20/11/19 |
| 73       | ISSUE FOR TENDERS | 20/11/19 |
| 74       | ISSUE FOR TENDERS | 20/11/19 |
| 75       | ISSUE FOR TENDERS | 20/11/19 |
| 76       | ISSUE FOR TENDERS | 20/11/19 |
| 77       | ISSUE FOR TENDERS | 20/11/19 |
| 78       | ISSUE FOR TENDERS | 20/11/19 |
| 79       | ISSUE FOR TENDERS | 20/11/19 |
| 80       | ISSUE FOR TENDERS | 20/11/19 |
| 81       | ISSUE FOR TENDERS | 20/11/19 |
| 82       | ISSUE FOR TENDERS | 20/11/19 |
| 83       | ISSUE FOR TENDERS | 20/11/19 |
| 84       | ISSUE FOR TENDERS | 20/11/19 |
| 85       | ISSUE FOR TENDERS | 20/11/19 |
| 86       | ISSUE FOR TENDERS | 20/11/19 |
| 87       | ISSUE FOR TENDERS | 20/11/19 |
| 88       | ISSUE FOR TENDERS | 20/11/19 |
| 89       | ISSUE FOR TENDERS | 20/11/19 |
| 90       | ISSUE FOR TENDERS | 20/11/19 |
| 91       | ISSUE FOR TENDERS | 20/11/19 |
| 92       | ISSUE FOR TENDERS | 20/11/19 |
| 93       | ISSUE FOR TENDERS | 20/11/19 |
| 94       | ISSUE FOR TENDERS | 20/11/19 |
| 95       | ISSUE FOR TENDERS | 20/11/19 |
| 96       | ISSUE FOR TENDERS | 20/11/19 |
| 97       | ISSUE FOR TENDERS | 20/11/19 |
| 98       | ISSUE FOR TENDERS | 20/11/19 |
| 99       | ISSUE FOR TENDERS | 20/11/19 |
| 100      | ISSUE FOR TENDERS | 20/11/19 |

**Status:** STATUS  
Project: MOUNTAIN RESIDENTIAL DEVELOPMENT  
Client: LONGVIEW ESTATES LTD.  
Address: LAMADONNE, BALLYMOYANE, CO. COOK.  
Date: 20/11/19 Scale: 1:1000 @ A0  
Drawn By: JF Checked By: MC Approved By: PH

17-002-P-113  
horgan carroll ARCHITECTS  
021 400110 • info@horgan-carroll.ie • www.horgan-carroll.ie  
3 WOLFE EDGE, RIVERDALE WALK, MIDLETON, CO. COOK, P25 A003  
Proposed Site Plan on Existing Survey